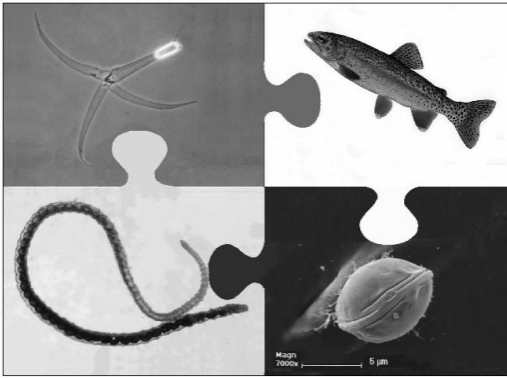


**Whirling Disease: *Myxobolus cerebralis***



---

---

---

---

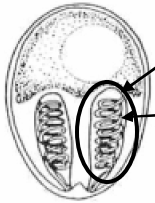
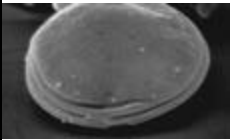
---

---

---

---

**Evidences for  
Phylum Cnidaria**



Several features originally  
mistaken for cellular components  
now considered actual cells

Polar bodies

Reduced nematocysts hold  
position in the infected fish

---

---

---

---

---

---

---

---



**Symptoms**

---

---

---

---

---

---

---

---