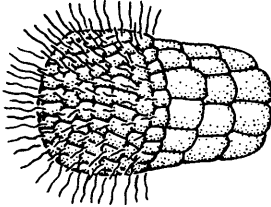
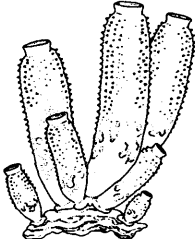


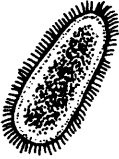

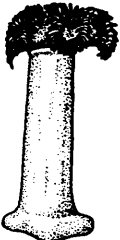
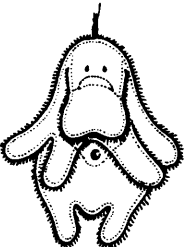
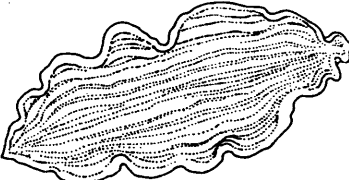
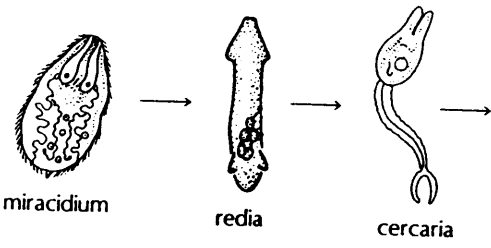
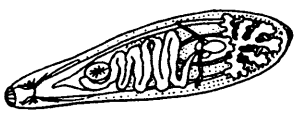
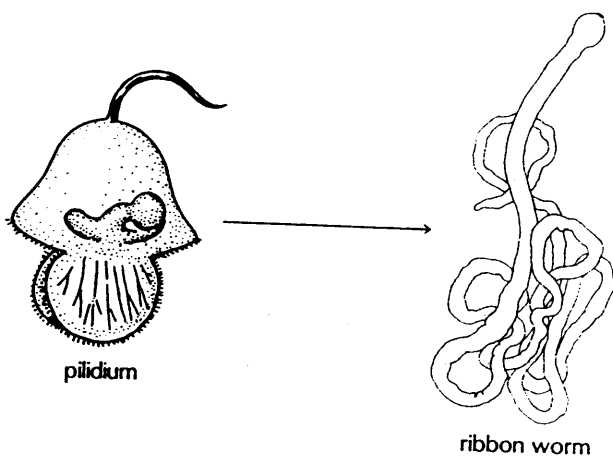
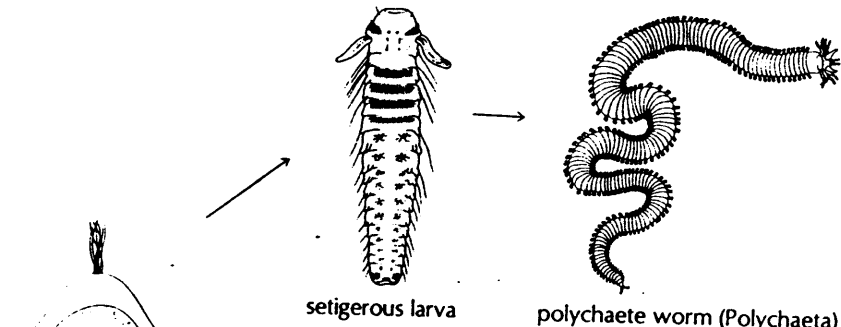
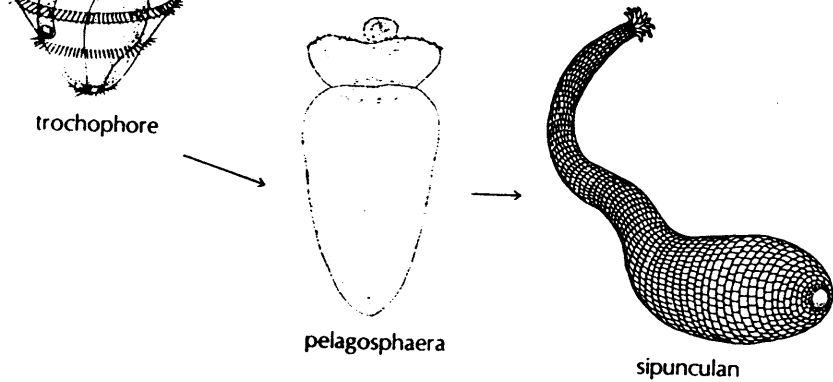


Representative Larval Invertebrates

Phylum	Characteristic Larva	Adult	Page Reference
Porifera	 amphiblastula	 sponge	71
Cnidaria (= Coelenterata)	 strobilating scyphistoma	 ephyra	83
	 planula	 hydroid (Hydrozoa)	86
		 anemone (Anthozoa)	91
Platyhelminthes	 Müller's larva	 flatworm (Turbellaria)	131

Continued on next page

Phylum	Characteristic Larva	Adult	Page Reference
Platyhelminthes (continued)	 <p data-bbox="495 526 609 560">miracidium</p> <p data-bbox="706 548 755 582">redia</p> <p data-bbox="868 560 950 593">cercaria</p>	 <p data-bbox="1055 515 1242 548">fluke (Trematoda)</p>	137
Rhynchocoela (= Nemertea)	 <p data-bbox="665 963 747 996">pilidium</p> <p data-bbox="1063 1041 1201 1075">ribbon worm</p>		169
Annelida	 <p data-bbox="730 1377 885 1411">setigerous larva</p> <p data-bbox="958 1388 1266 1422">polychaete worm (Polychaeta)</p>		232
Sipuncula	 <p data-bbox="462 1556 592 1590">trochophore</p> <p data-bbox="730 1780 876 1814">pelagospaera</p> <p data-bbox="1055 1803 1169 1836">sipunculan</p>		253

Phylum

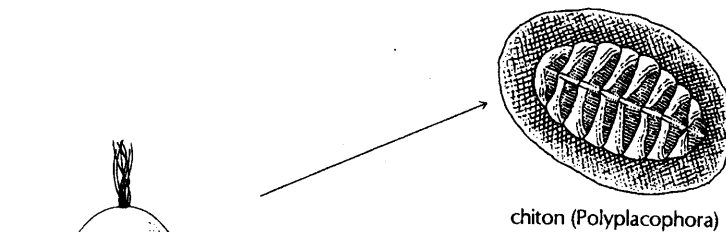
Characteristic Larva

Adult

Page Reference

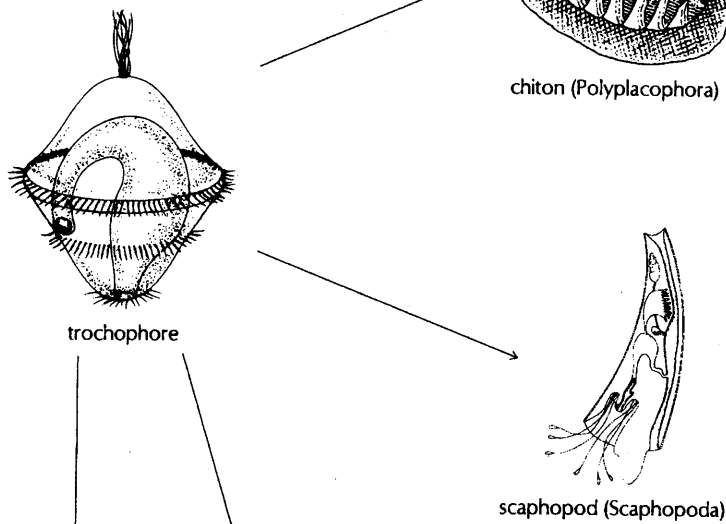
Mollusca

252



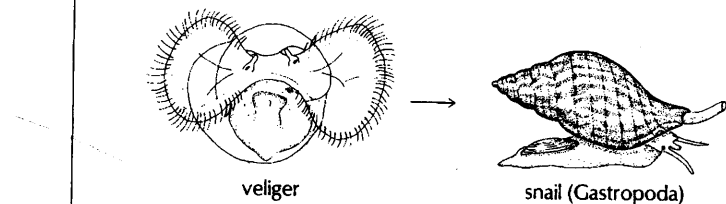
chiton (Polyplacophora)

252



scaphopod (Scaphopoda)

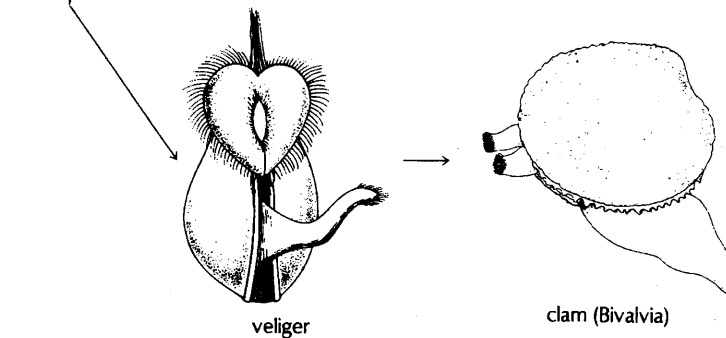
252



veliger

snail (Gastropoda)

252



veliger

clam (Bivalvia)

*continued on next page*