

Chapter 17: Annelida (annulus=Latin: ring) segmented worms

15,000 spp.

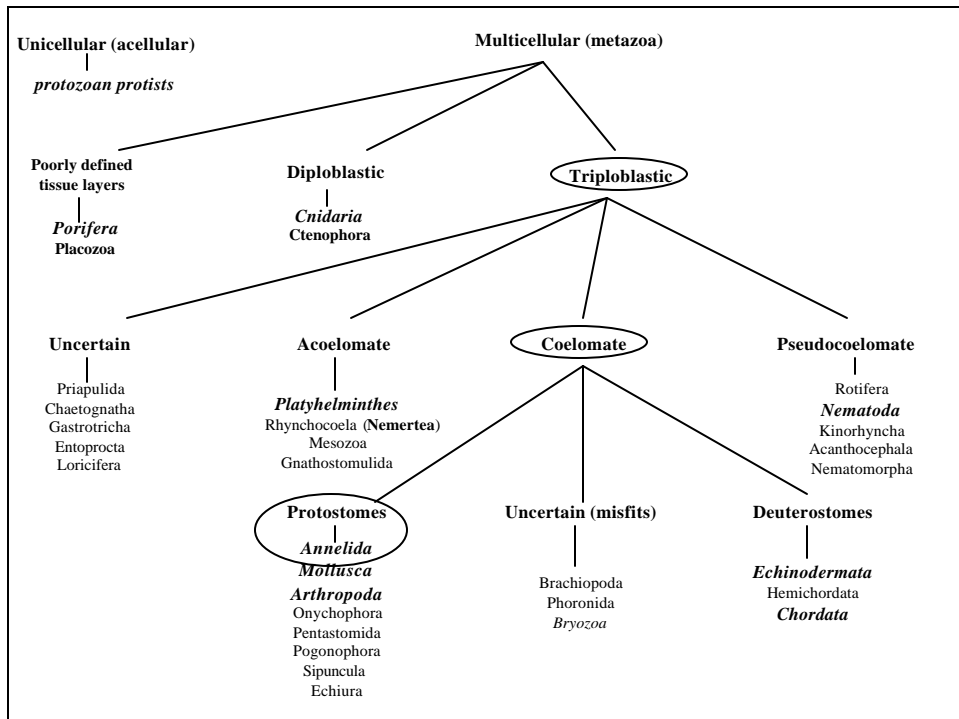


Class

Polychaeta ~10,000 spp.

Oligochaeta >3,000 spp.

Hirudinea (leeches) <2,000 spp.



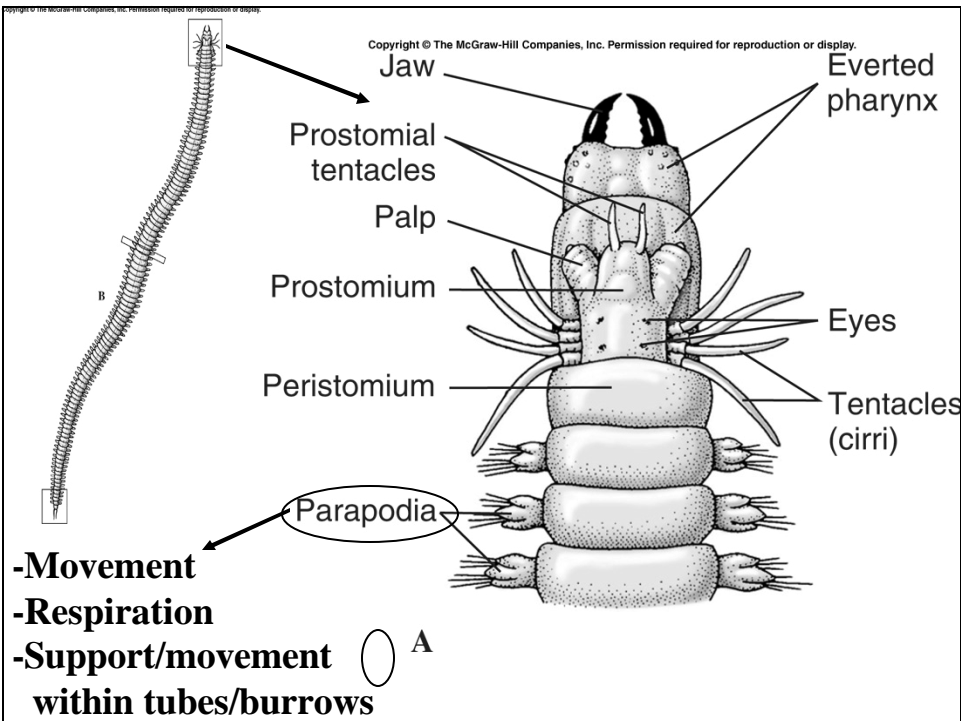
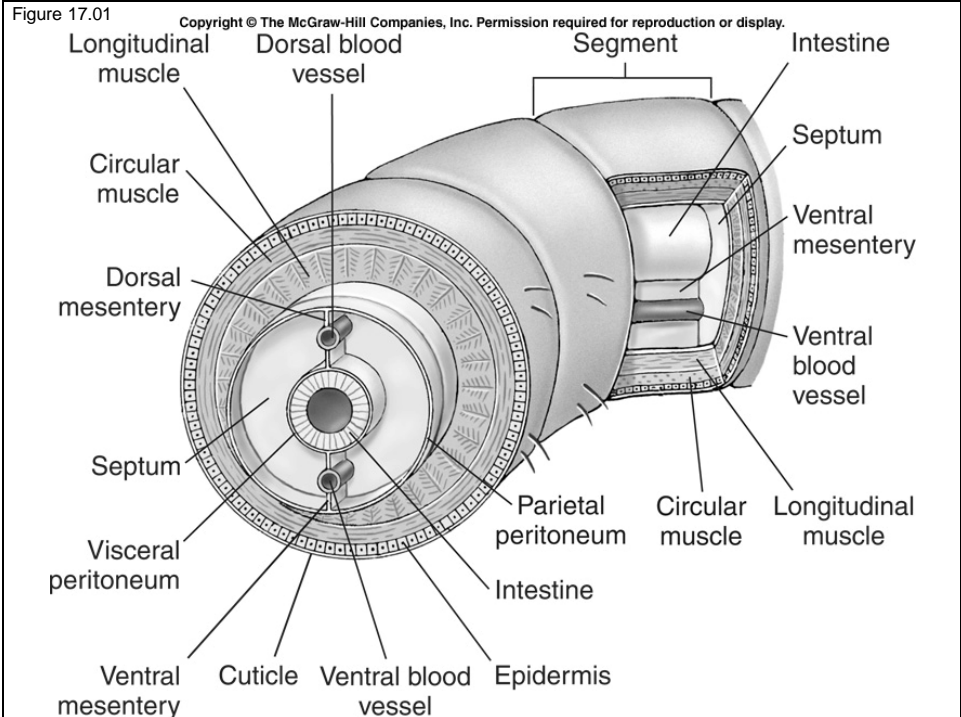
General Annelidan Characteristics

- 1) *bilateral symmetry*
- 2) true *protostome coelomates* w spiral cleavage & mosaic development
- 3) segmentation
 - a) body segments marked by circular grooves = *annuli*
 - b) *metamerism*: repetition of organs in segments (metameres/somites)
 - 1) homologous to arthropods
 - 2) evolved independently in vertebrates
 - c) walls called *septa* to separate segments
- 4) **nervous system** more centralized
- 5) **circulatory system** more complex
- 6) *metanephridium* system (true kidney system connected to coelom with filtration by podocytes)
- 7) *setae* tiny chitinous bristles (except leeches)
 - a) short setae anchor earthworm segment to prevents slippage
 - b) long setae help aquatic worms swim
- 8) complete gut

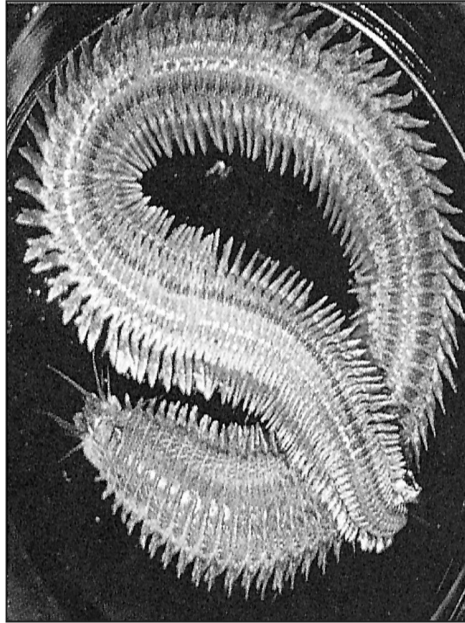
Polychaeta

mainly marine & usually benthic





Copyright © The McGraw-Hill Companies, Inc. Permission required for reproduction or display.



Copyright © The McGraw-Hill Companies, Inc. Permission required for reproduction or display.

Copyright © The McGraw-Hill Companies, Inc. Permission required for reproduction or display.

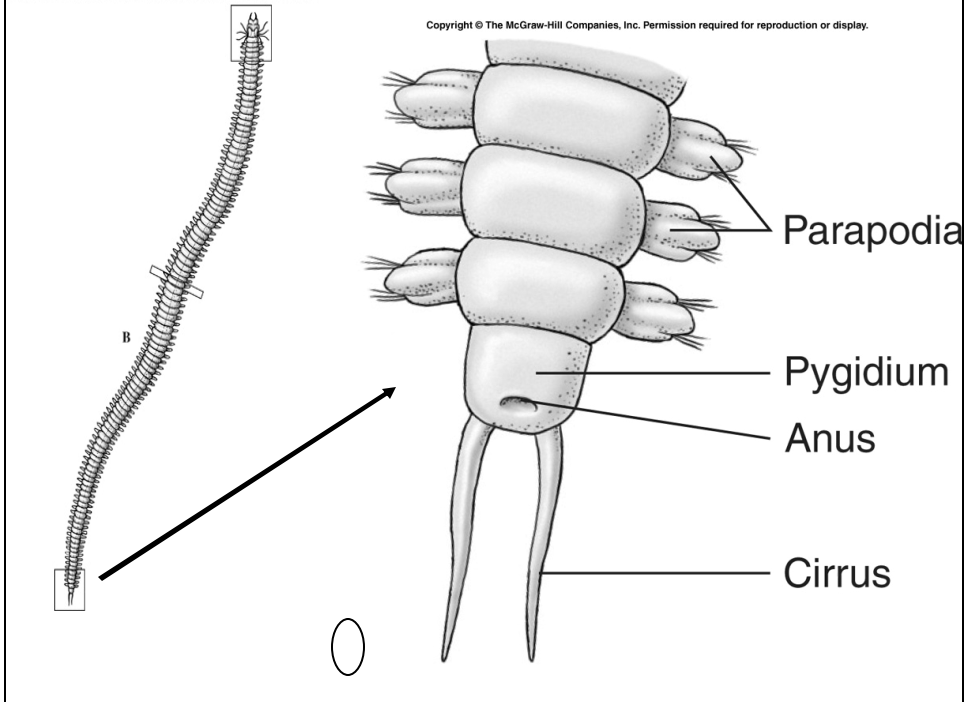


Figure 17.03d

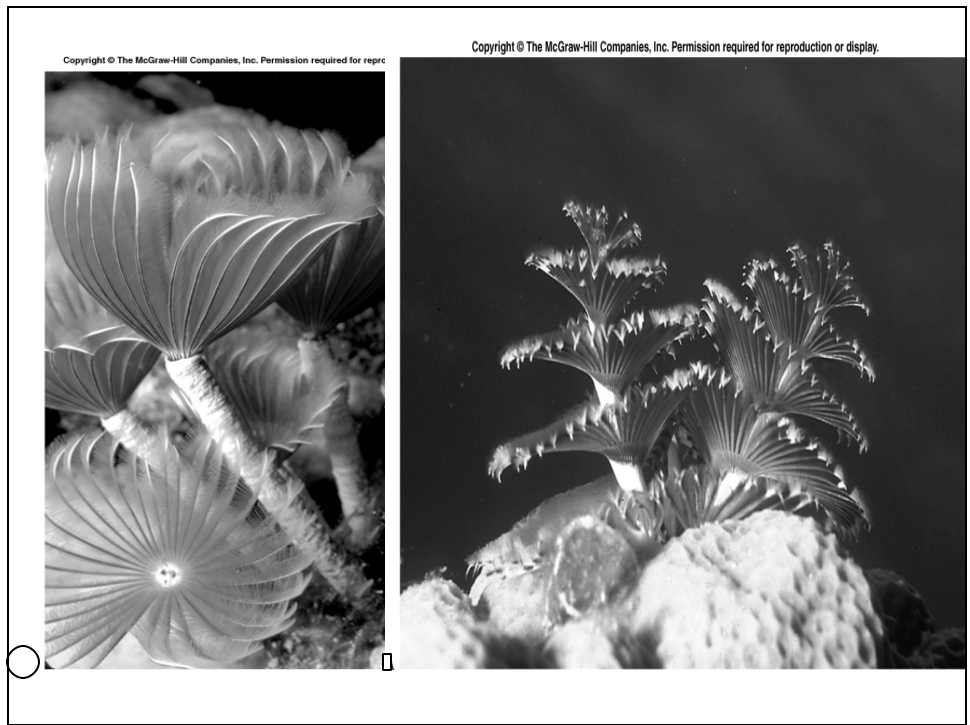
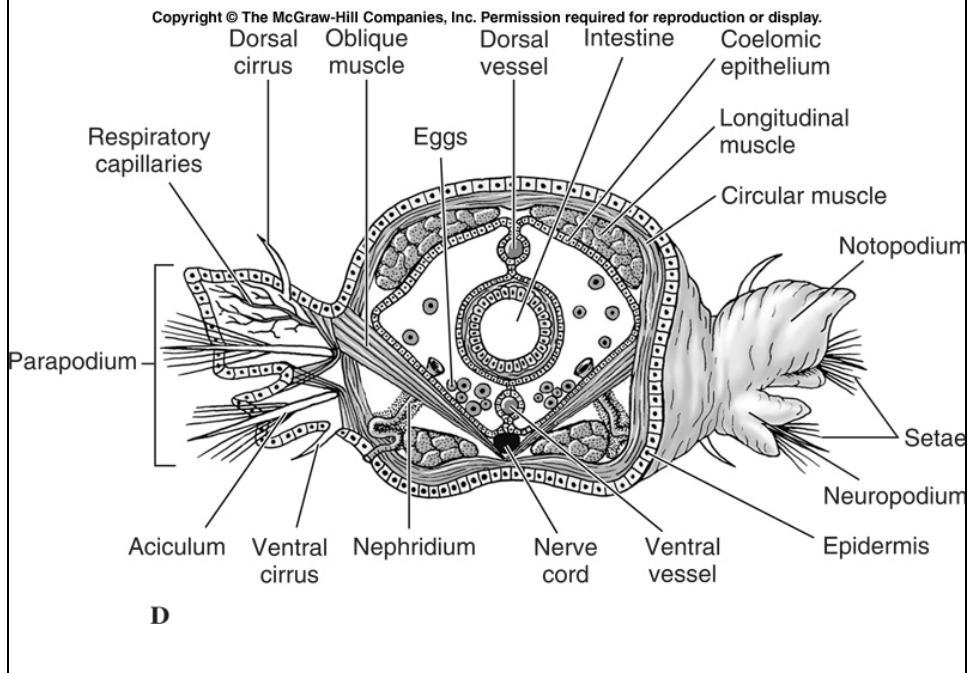


Figure 17.04

Copyright © The McGraw-Hill Companies, Inc. Permission required for reproduction or display.

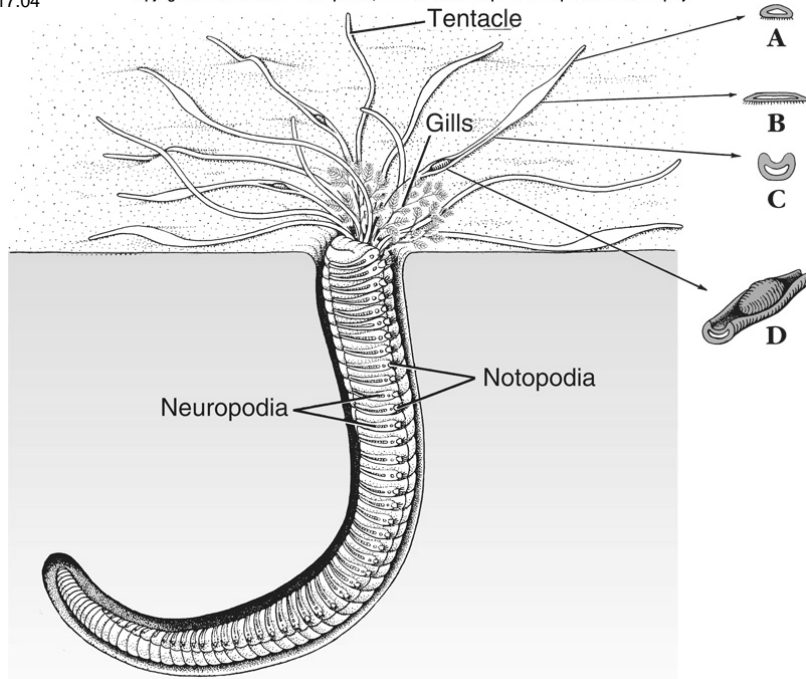
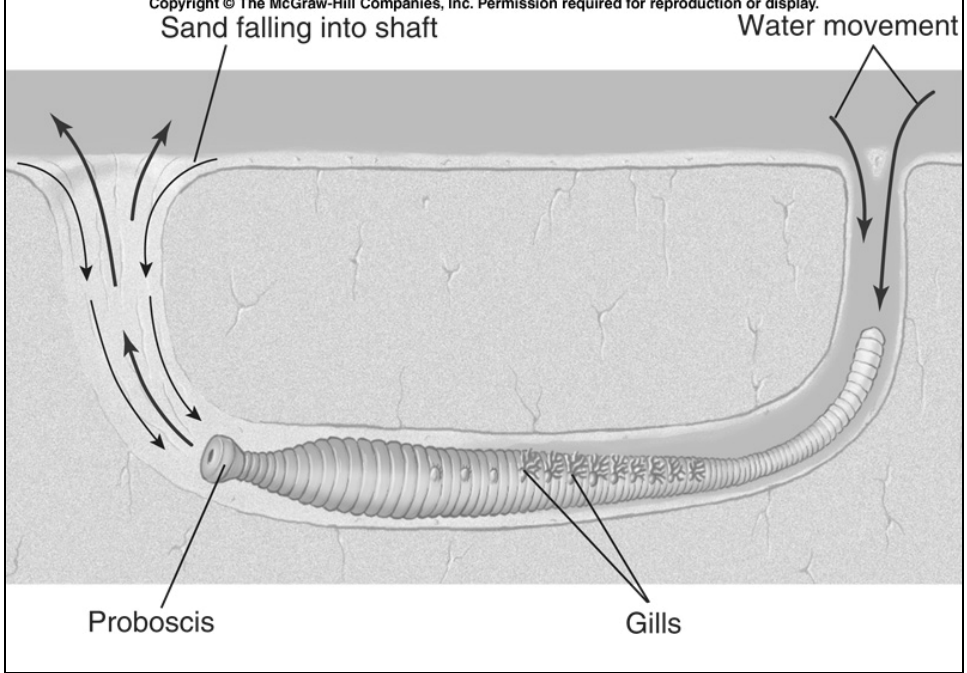
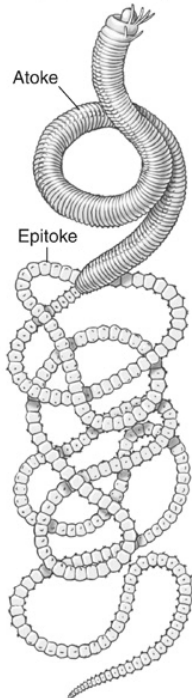


Figure 17.05

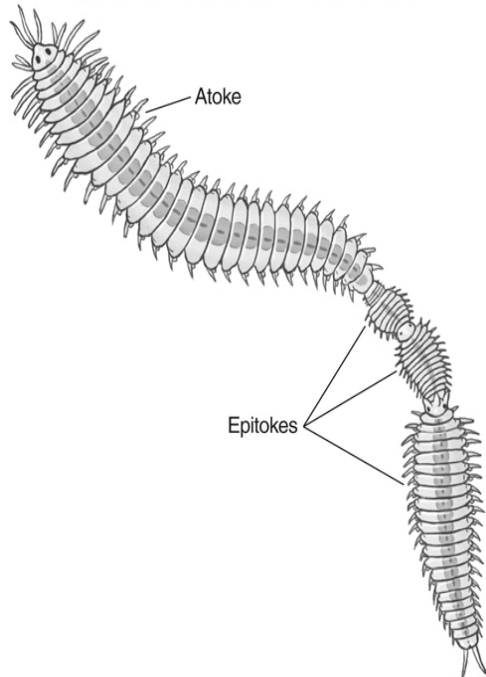
Copyright © The McGraw-Hill Companies, Inc. Permission required for reproduction or display.



Copyright © The McGraw-Hill Companies, Inc. Permission required for reproduction or display.



Copyright © The McGraw-Hill Companies, Inc. Permission required for reproduction or display.



0011.jpg

Copyright © The McGraw-Hill Companies, Inc. Permission required for reproduction or display.



Photo Copyright © Diane R. Nelson

Copyright © The McGraw-Hill Companies, Inc. Permission required for reproduction or display.

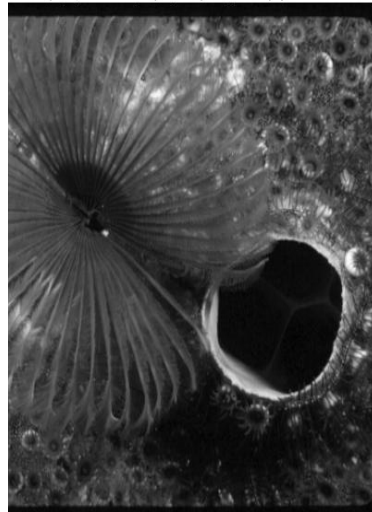
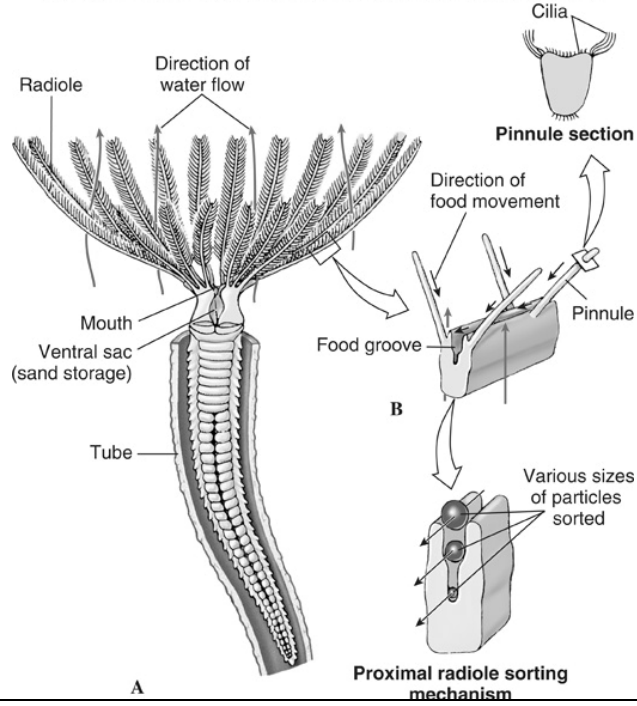


Photo Copyright © Diane R. Nelson

Figure 17.10

Copyright © The McGraw-Hill Companies, Inc. Permission required for reproduction or display.



0010.jpg

Copyright © The McGraw-Hill Companies, Inc. Permission required for reproduction or display.



Photo Copyright © Diane R. Nelson

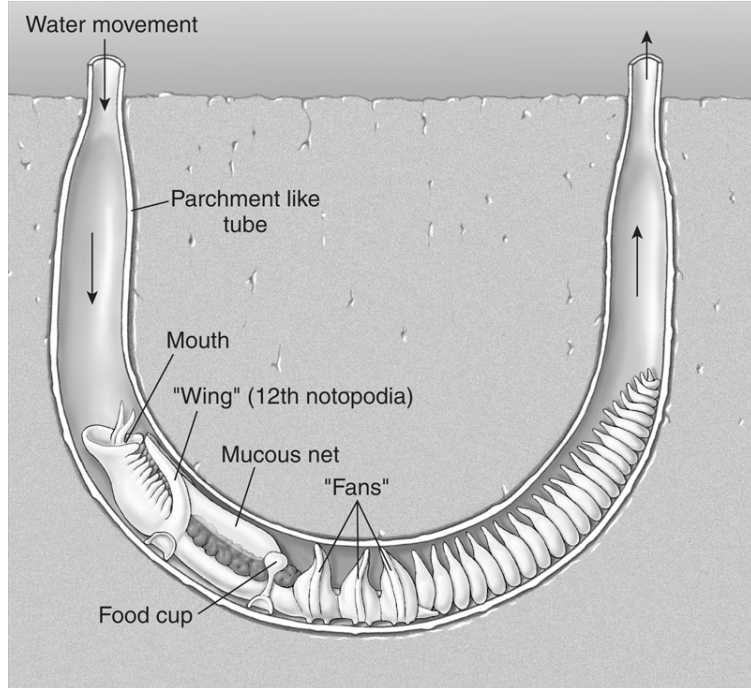
Copyright © The McGraw-Hill Companies, Inc. Permission required for reproduction or display.



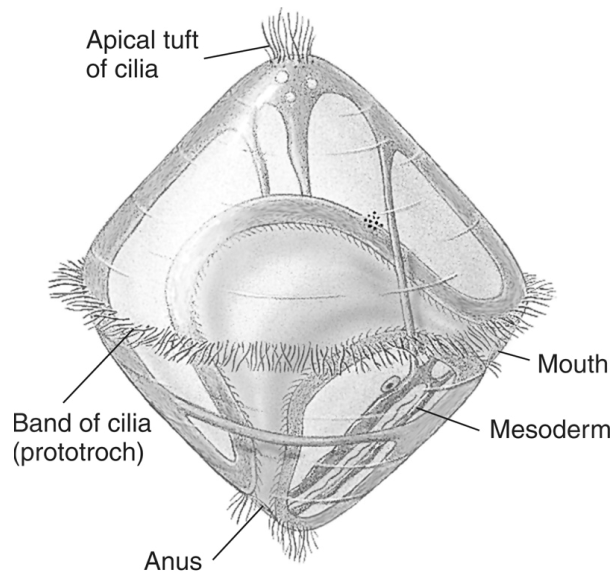
Photo Copyright © Diane R. Nelson

Figure 17.11

Copyright © The McGraw-Hill Companies, Inc. Permission required for reproduction or display.



Trochophore Larva



Oligochaeta

freshwater or terrestrial

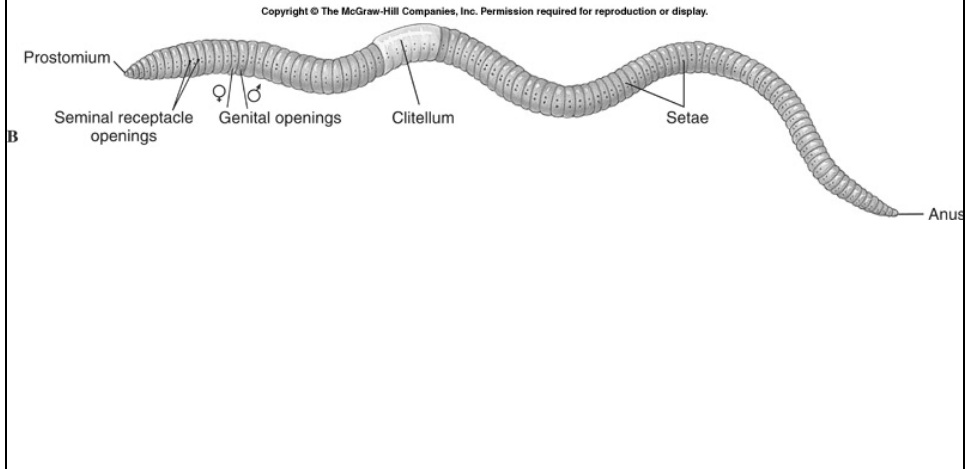


Figure 17.12a

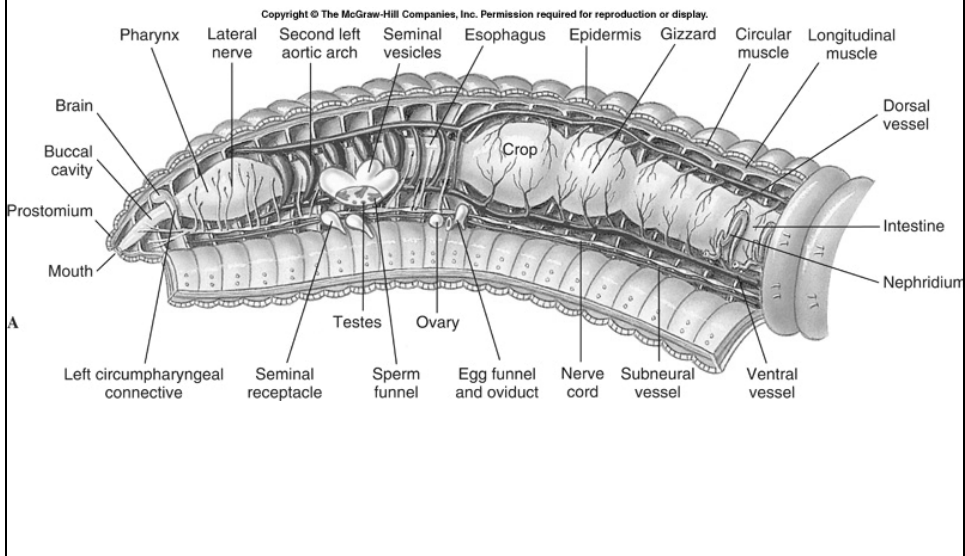


Figure 17.12c

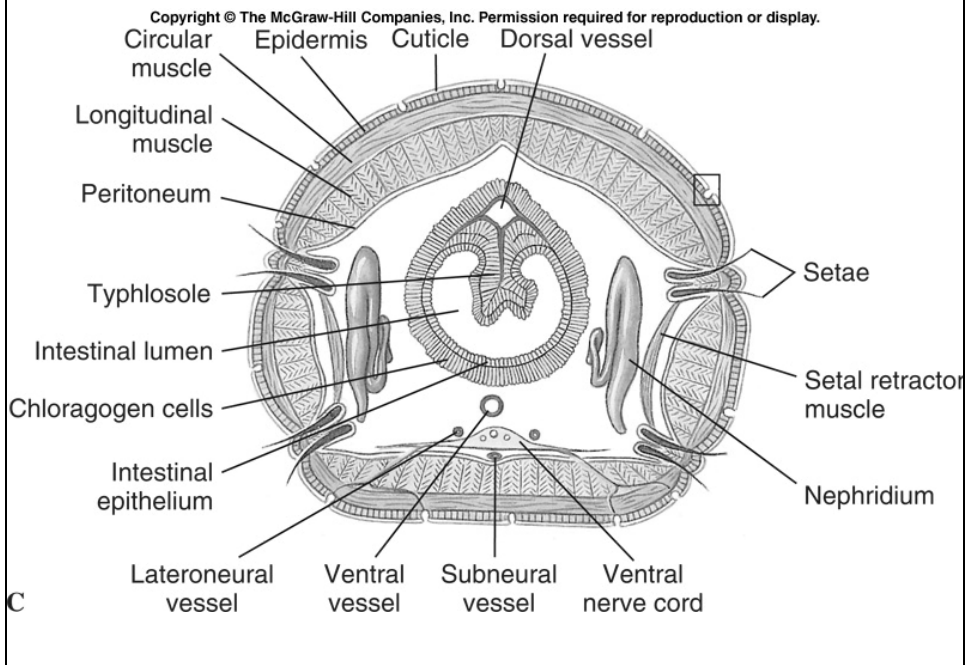


Figure 17.12d

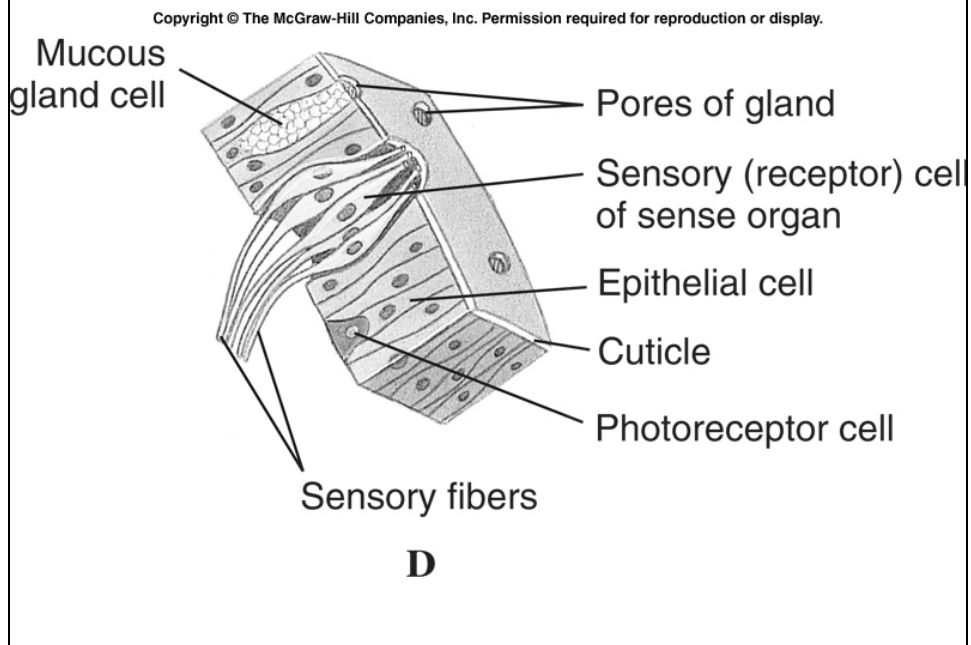


Figure 17.13

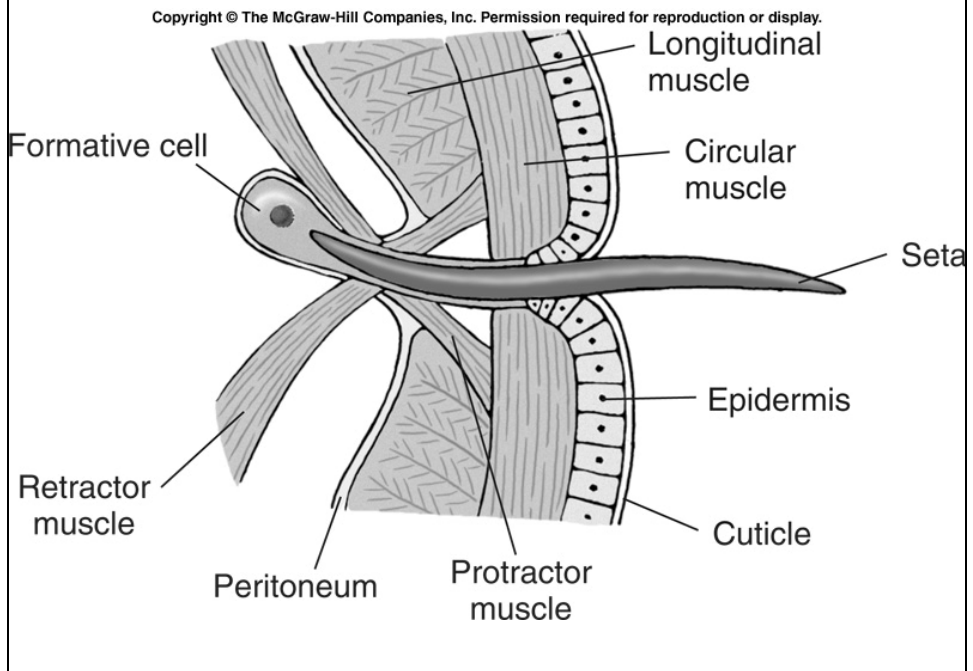


Figure 17.14

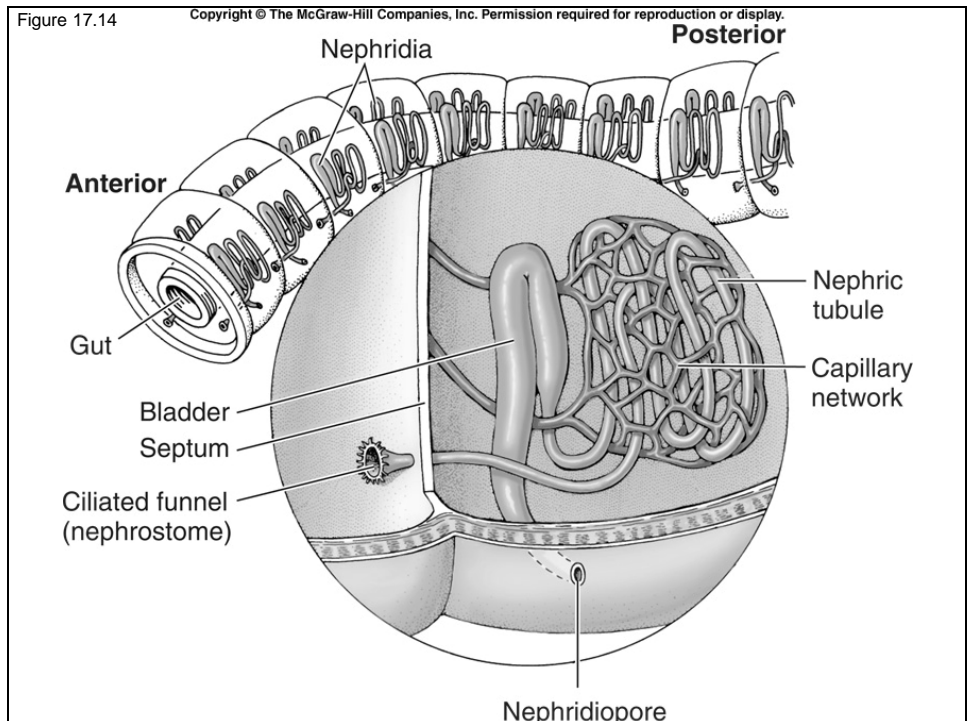


Figure 17.15

Copyright © The McGraw-Hill Companies, Inc. Permission required for reproduction or display.

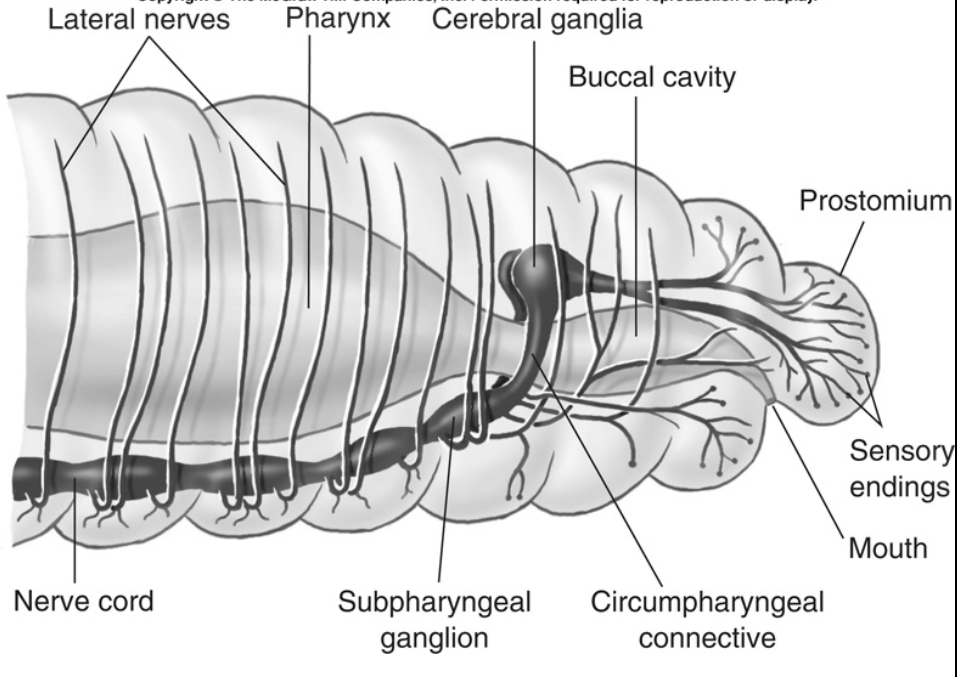


Figure 17.16

Copyright © The McGraw-Hill Companies, Inc. Permission required for reproduction or display.

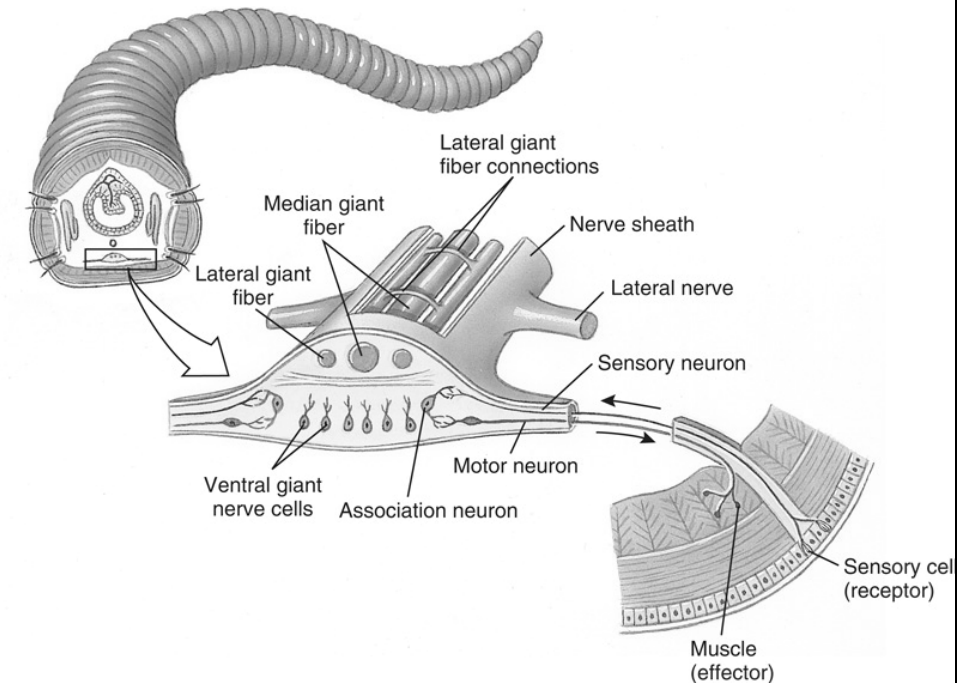


Figure 17.17g

Copyright © The McGraw-Hill Companies, Inc. Permission required for reproduction or display.



Figure 17.17

Copyright © The McGraw-Hill Companies, Inc. Permission required for reproduction or display.

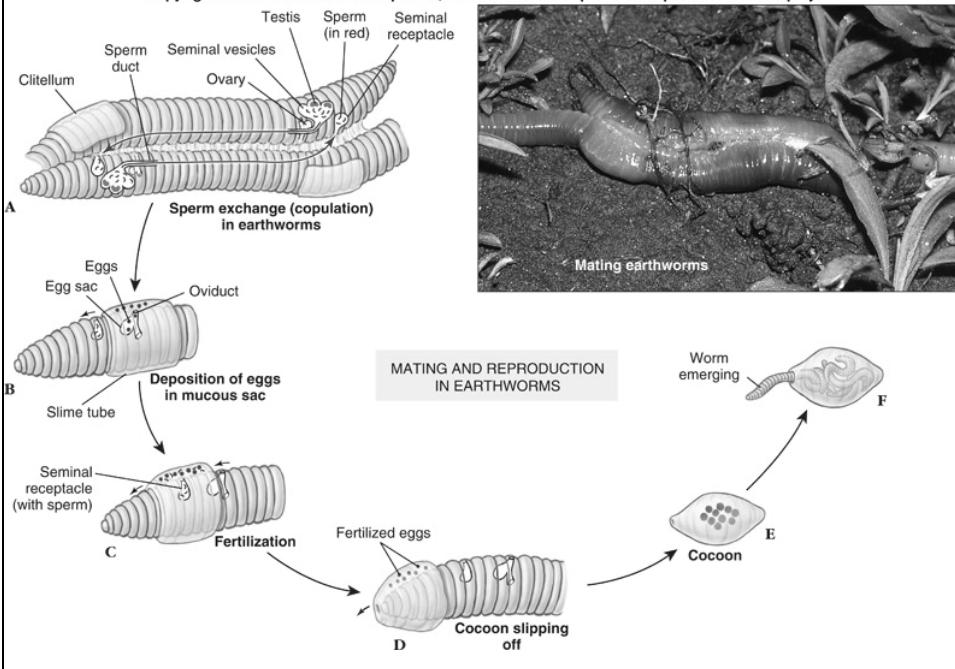


Figure 17.17a

Copyright © The McGraw-Hill Companies, Inc. Permission required for reproduction or display.

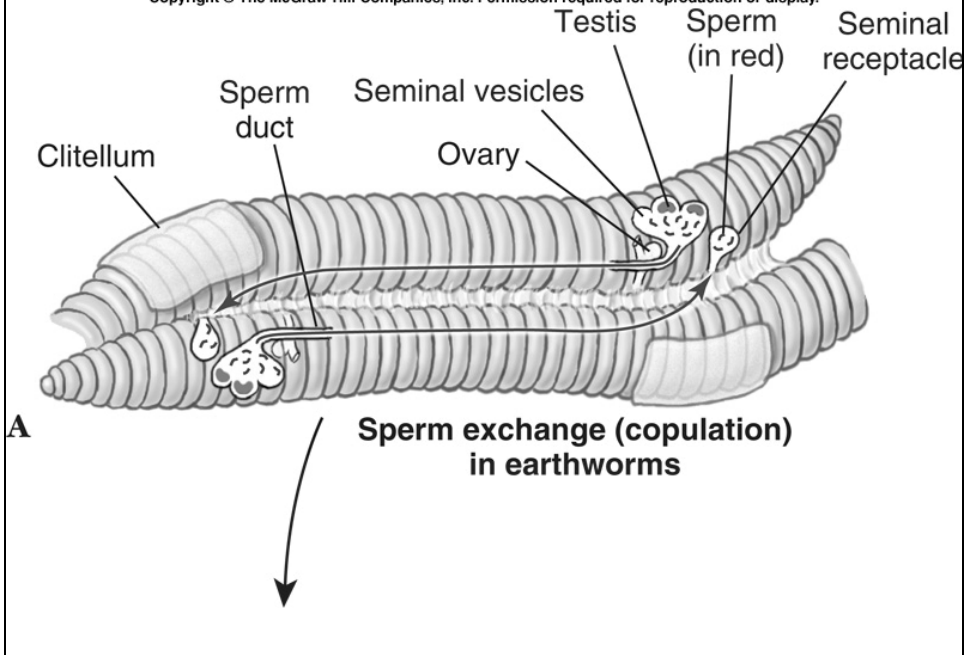


Figure 17.17b

Copyright © The McGraw-Hill Companies, Inc. Permission required for reproduction or display.

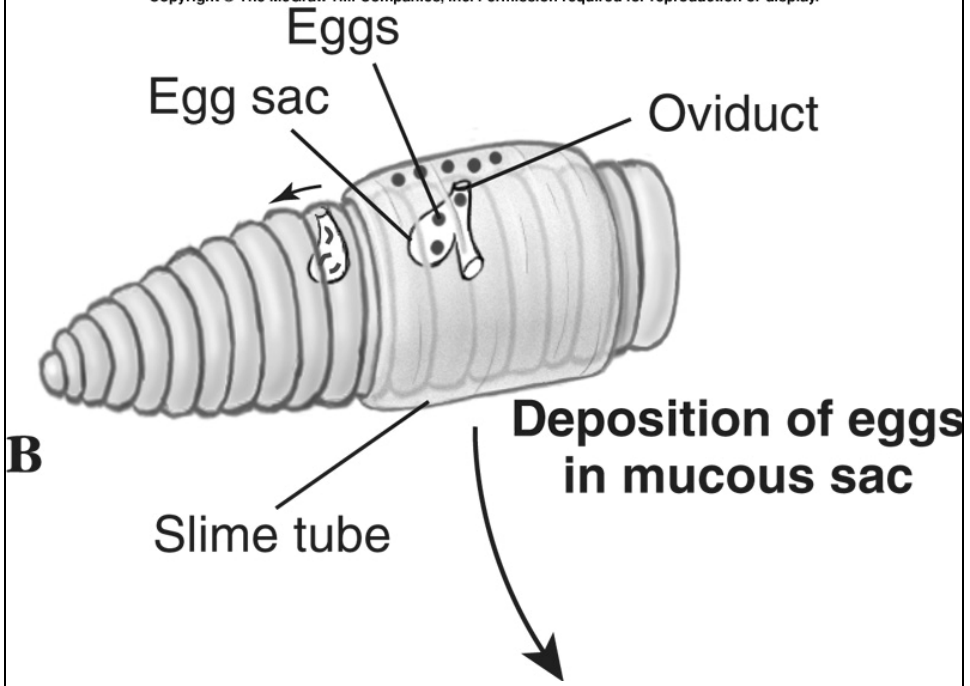


Figure 17.17c

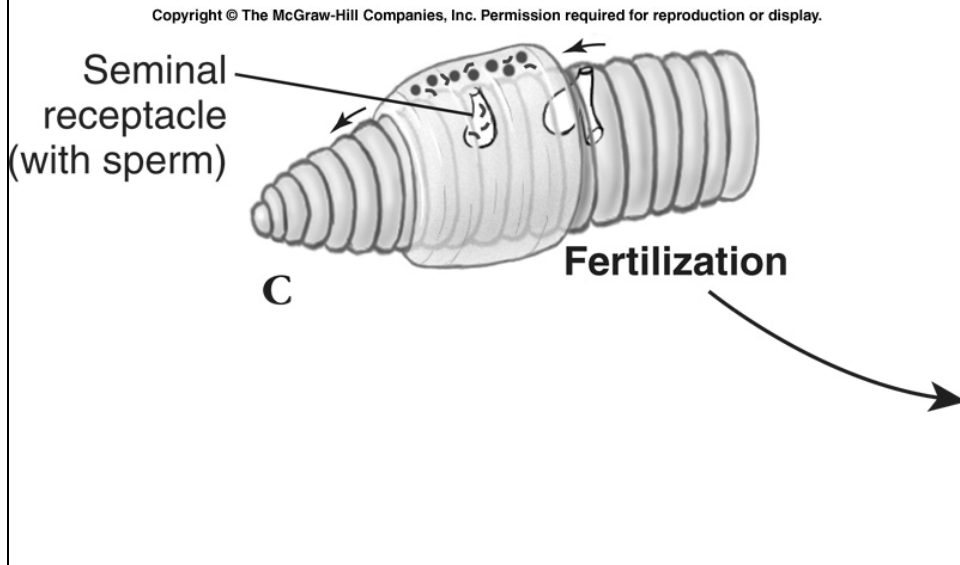


Figure 17.17d

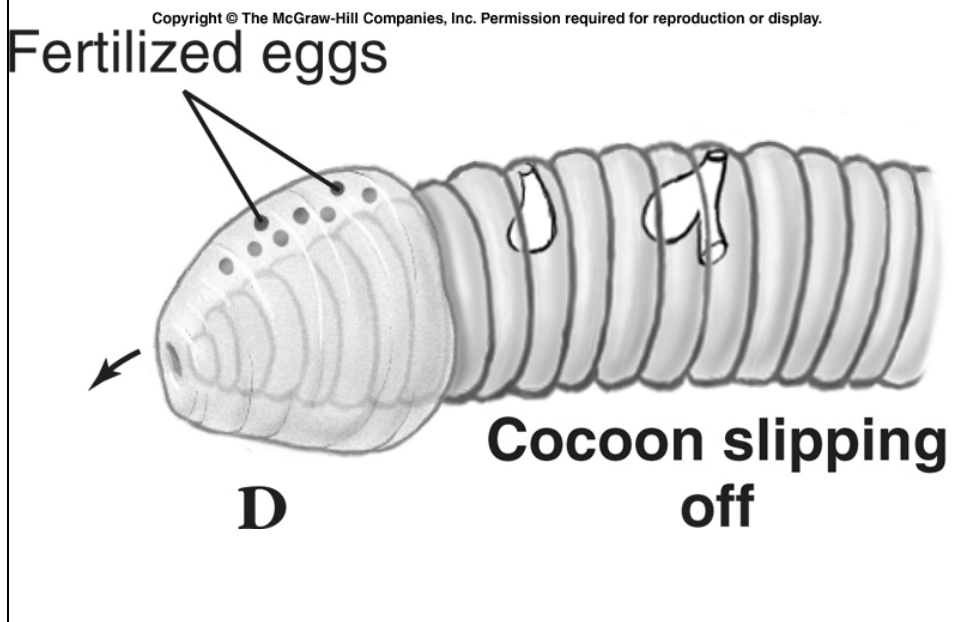


Figure 17.17e

Copyright © The McGraw-Hill Companies, Inc. Permission required for reproduction or display.

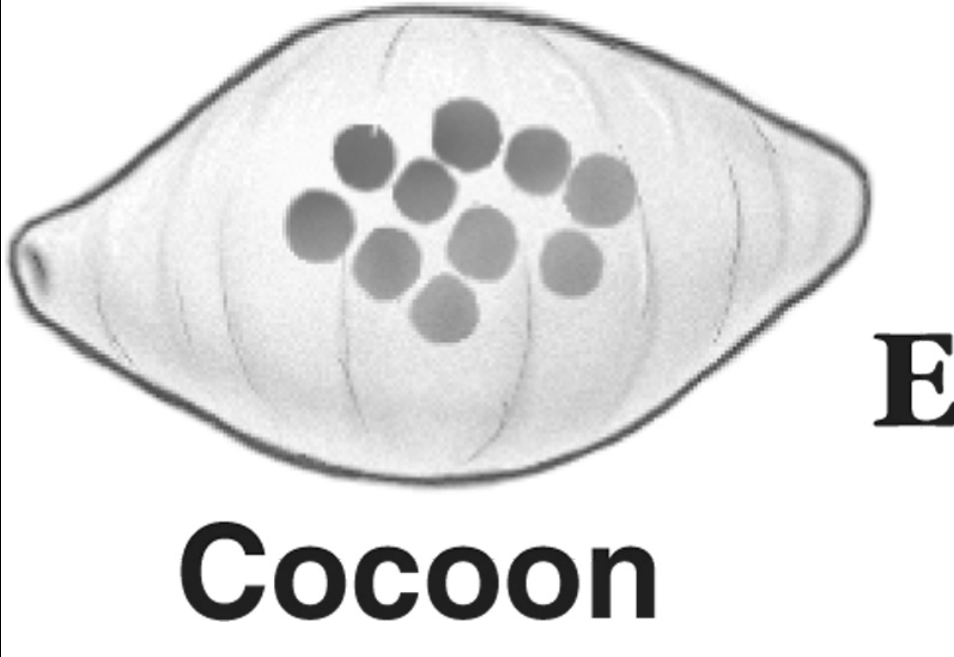


Figure 17.17f

Copyright © The McGraw-Hill Companies, Inc. Permission required for reproduction or display.

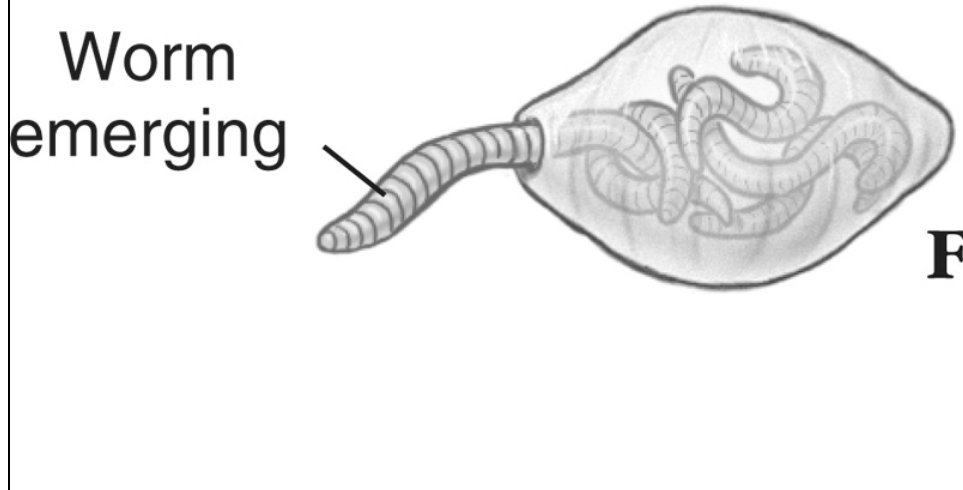
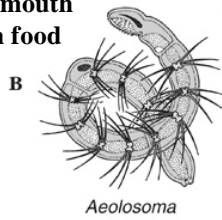


Figure 17.18

Copyright © The McGraw-Hill Companies, Inc. Permission required for reproduction or display.

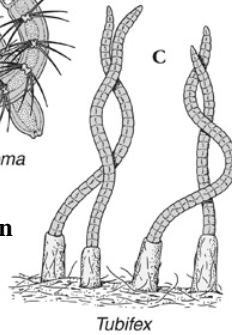
freshwater oligochaetes

cilia around mouth
to sweep in food



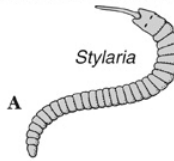
Aeolosoma

Intermediate host for the hydrozoan
Myxobolus cerebralis causing
whirling disease



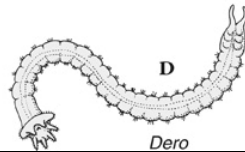
Tubifex

Prostomium drawn out
into a long snout



Stylaria

Ciliated anal gills



Dero

Whirling Disease: *Myxobolus cerebralis*

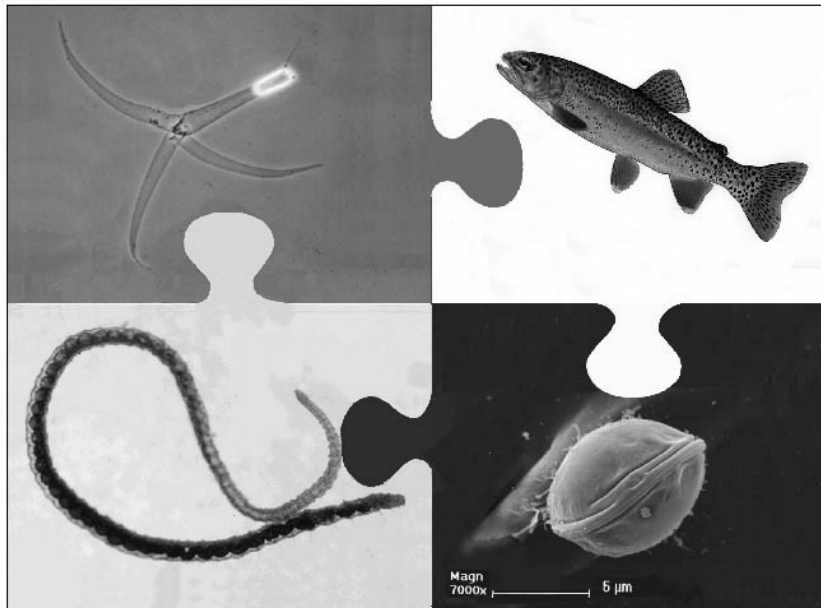


Figure 17.19

Hirudinea

freshwater, terrestrial, ectoparasite, predaceous

Copyright © The McGraw-Hill Companies, Inc. Permission required for reproduction or display.

Copyright © The McGraw-Hill Companies, Inc. Permission required for reproduction or display.

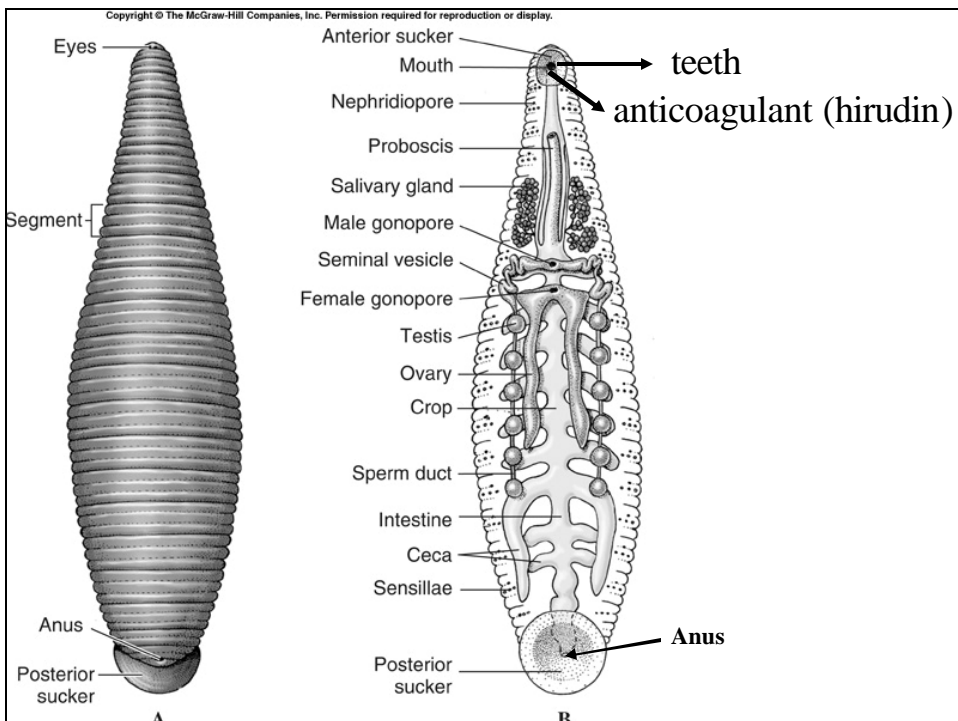
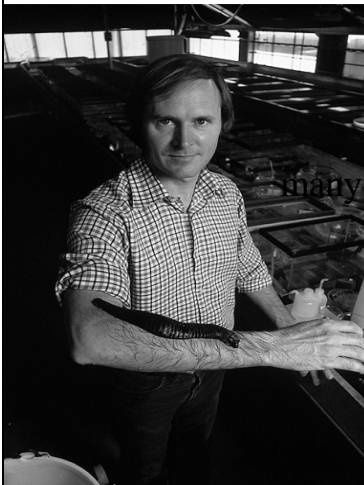


Figure 17.22

Copyright © The McGraw-Hill Companies, Inc. Permission required for reproduction or display.

