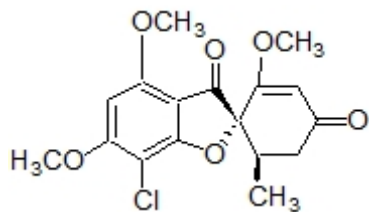


Name: _____

Organic I Lecture
Spring 2012
Quiz #4
(10 points)

1. Griseofulvin is a strong antifungal agent tested effective against pathogenic dermatophytes (*J. Med. Chem.*, **2012**, 652). Label each chiral center as having *R* or *S* configuration. (4 points)



2. Correctly draw (R) glyceraldehyde, CH₂(OH)CH(OH)CHO, in a Fischer projection. (3 points, problem 5-17e)
3. If dissolving 5 grams of glucose in 10 mL of water produced a solution having an observed rotation of +26.4° when placed in a 10 cm long polarimetry tube, what is the specific rotation of glucose? Show all of your work for full credit. (3 points)