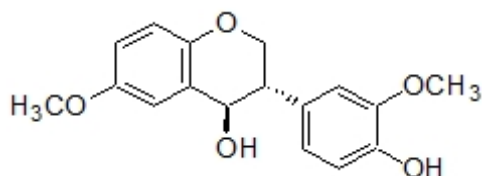


Name: \_\_\_\_\_

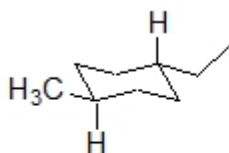
**Organic I Lecture**  
**Spring 2011**  
**Quiz #4**  
(10 points)

1. The compound shown below is a cytochrome P50 inhibitory natural product (*J. Med. Chem.* **2011**, 102). Label each chiral center as having *R* or *S* configuration. (4 points)

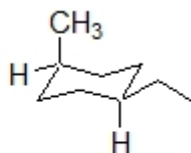


2. Draw (R)-glyceraldehyde, HOCH<sub>2</sub>CH(OH)CHO, in a Fischer projection. (3 points, problem 5-17e)

3. State the relationship between compound **A** and compound **B** as being the same compound, enantiomers, diastereomers, or not stereoisomers. (2 points)



**A**



**B**

4. State whether compound **A** is chiral or achiral. (1 points)