

Name: _____

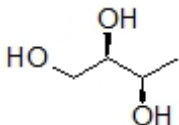
Organic I Lecture

Fall 2012

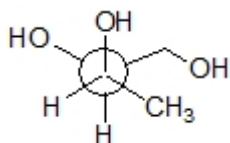
Quiz #4

(10 points)

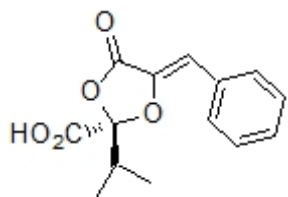
1. Translate the following perspective structure to a Fischer projection. (3 points, problem 5-28d)



2. State the stereochemical relationship between the structure in problem 1 and the structure below as being same structure, enantiomer, diastereomer, or constitutional isomers. (2 points)



3. Guignardic acid, shown below, has been found to be phytotoxic (*J. Nat. Prod.* **2012**, 1265). Assign all chiral centers as having *R* or *S* configuration. (2 points)



4. Given that sucrose has a specific rotation of $+66.5^\circ$, what is the observed rotation of solution made from 1.5 g sucrose dissolved in 10 mL water and placed in a 10 cm long sample cell. Show all of your work for full credit. (3 points)