

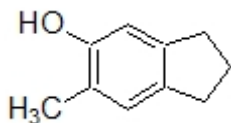
Name: _____

Organic I Lecture
Spring 2011
Quiz #2
(10 points)

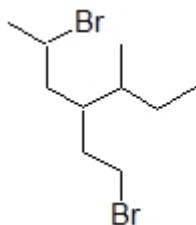
1. Use a Newman projection, about the C3-C4 bond, to draw the most stable conformer for 3,3-dimethylhexane. (3 points, problem 3-42b)

2. What is the name of the conformer of butane, sitting down the C2-C3 bond, that is 0.9 Kcal/mol higher in energy than the most stable conformation? (2 points)

3. What functional group is represented in the following compound? (2 points)



4. Identify the correct systematic name for the following compound. (3 points)



- a) 6-bromo-4-(2-bromoethyl)-3-methylheptane
b) 1,5-dibromo-3-s-butylhexane
c) 4-s-butyl-2,6-dibromohexane
d) 2-bromo-4-(2-bromoethyl)-5-methylheptane
e) 4-(3-bromoethyl)-2-bromo-5-methylheptane