

Name: _____

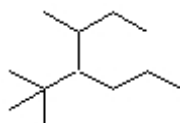
Organic I Lecture

Fall 2012

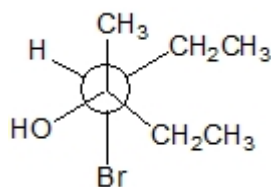
Quiz #2

(10 points)

1. Provide an IUPAC name for the following compound. (3 points, problem 3-4f)



2. Without changing conformations, translate the following Newman projection to a wedge-dash structure (3 points)



3. Draw the Newman projection in question #2 in its most stable conformation. (2 points)

4. What functional group is contained in the following structure? (2 points)

