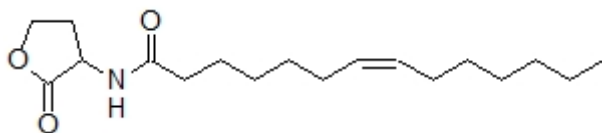


Name: _____

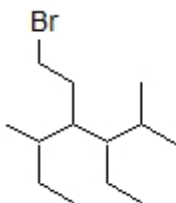
Organic I Lecture
Spring 2010
Quiz #1
(10 points)

1. The following compound is a natural product produced by bacteria infected orange trees. Circle and name the functional groups in the following structure. (3 points)



2. Draw a Newman projection along the C3-C4 bond to show the most stable conformation of 3-ethyl-2,4,4-trimethylheptane. (3 points, problem 3-47)

3. Circle the correct IUPAC name for the structure below. (3 points)



- a) 4-(2-bromoethyl)-3,5-diethyl-2-methylhexane
- b) 1-bromo-3-s-butyl-4-isopropylhexane
- c) 4-(2-bromoethyl)-3-isopropyl-5-methylheptane
- d) 4-(2-bromoethyl)-2,5-dimethyl-3-ethylheptane
- e) 4-(2-bromoethyl)-3-ethyl-2,5-dimethylheptane

4. _____ strain occurs when groups of bonding electrons are eclipsed. (1 points)